

Ercole stone





*Proud guardian of ancient sparks,
you stand against wind and time with the strength
of the myth embodied in your name.
Forged stone becomes the embrace in which
a primordial fire comes to life.
A companion to unforgettable evenings,
you are a living sculpture,
ever changing with the rhythm of the flame.*

Ercole Stone is an outdoor wood-burning fire pit that redefines the essence of open air living. The enduring quality of steel blends superbly with the timeless elegance of stone. Conceived as the vital centre of the outdoor space, Ercole gathers and welcomes your guests, celebrating the ancient pleasure of coming together around the flame.

SIZES

Ø1200 H360 mm
Ø1500 H420 mm
Ø2000 H420 mm
Ø2500 H420 mm

MATERIALS

Structure: Natural Corten steel.
Top: Rain Forest Brown, Rain Forest Green, Bronzite, Santafiora trachyte.

ACCESSORIES

Steel closure top for the combustion chamber: included.
Stainless-steel barbecue grill kit, fire screen, and storage cover: optional.

FUEL

Wood.
Upon request, the fire pit can be geared for LPG, natural gas or bioethanol.

- The product is supplied ready-to-assemble.

MATERIALS

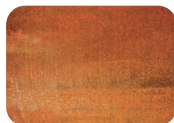
▪ Corten steel



Corten 32
Natural state



Corten
First oxidation



Corten
Developing patina



Corten 32A
Stabilized patina

Corten steel is supplied in its natural state, typically blue-black in appearance (32). At this stage, the surface has not yet developed its characteristic protective patina, which forms gradually under natural weather conditions.

The oxidation process depends on exposure to atmospheric agents, and as the steel undergoes its natural cycle of maturation, it acquires its signature deep brown hue (32A). In the early stages, the steel may release oxide residues that can stain adjacent surfaces; this is a normal, intrinsic aspect of the material's weathering process.

Stones

The stones are selected for their excellent structural performance, durability, and resistance to weathering. The slabs undergo special processing and surface finishes that enhance their aesthetic appeal while preserving the natural variations in color and texture that are characteristic of every type of stone. Since stones are natural materials, their appearance may vary depending on the quarrying period.

▪ Rain Forest



Rain Forest 19
Brown



Rain Forest 18
Green

A natural stone with a striking visual presence, recognizable for its branching veins that evoke intertwining plant life. The Green variant stands out for its deep green tones, veined with light and dark filaments, while the Brown version features a warmer palette composed of rich earth tones and coppery nuances. In both variants, the natural pattern creates dynamic, distinctive surfaces capable of turning the material into the focal point of any space. Compact and durable, this stone combines material strength with aesthetic refinement, bringing a bold and sophisticated presence to any environment. In some cases, a single slab may naturally display both shades—Brown and Green. This characteristic, inherent to the stone's geological formation, enhances its value and uniqueness, making each piece truly unrepeatable.

Available finish: brushed.

▪ Bronzite

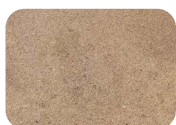


Bronzite 51

A quartzite with an intense, deep character, recognizable for its rich brown tones that evoke molten bronze. The surface is traversed by subtle chromatic shifts, dark veining, and metallic highlights which, in combination with the earthy tones, create a textured presence that is both rich and vibrant. Durable and highly versatile, Bronzite embodies a primal allure, blending elegance and strength into a visually striking material.

Available finish: brushed.

▪ Santafiora Trachyte



Santafiora 20

A fine and versatile sandstone, distinguished by its warm, natural tones ranging from brown to hazelnut. Quarried in Italy, it offers excellent structural performance, durability, and resistance to weathering. Its structural solidity, combined with the natural expressiveness of its surface, makes it an ideal choice for outdoor spaces, contributing to the creation of elegant environments that blend harmoniously with the landscape.

Available finish: brushed.

Our products may display superficial irregularities or chromatic variations.

These are intentional results of our choice to use materials and finishes that embrace natural ageing, making each piece truly unique.

Stone elements may develop fine cracks or slight surface variations—intrinsic qualities of the material that emerge through natural settling and environmental changes.

Over time, cyclical exposure to atmospheric agents such as rain, sun, wind, and local climate conditions may alter the product's appearance.

This evolution is not a defect, but a distinctive characteristic of the materials used.

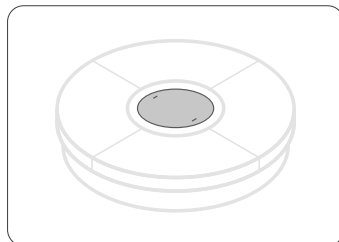
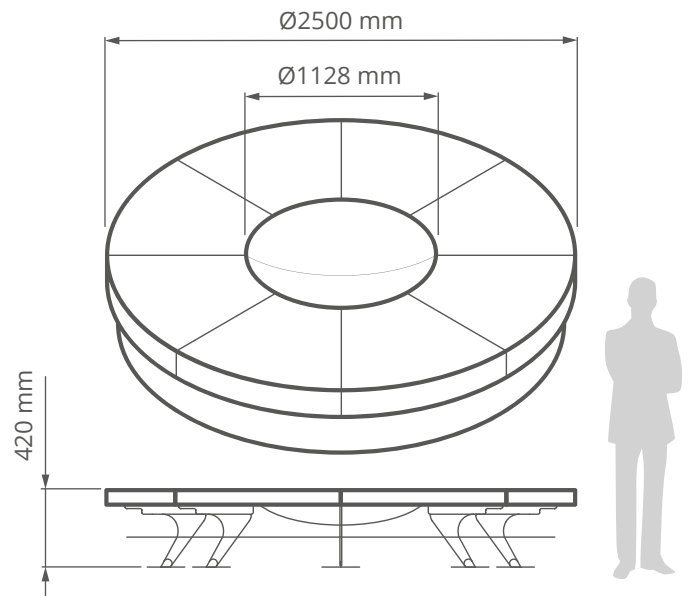
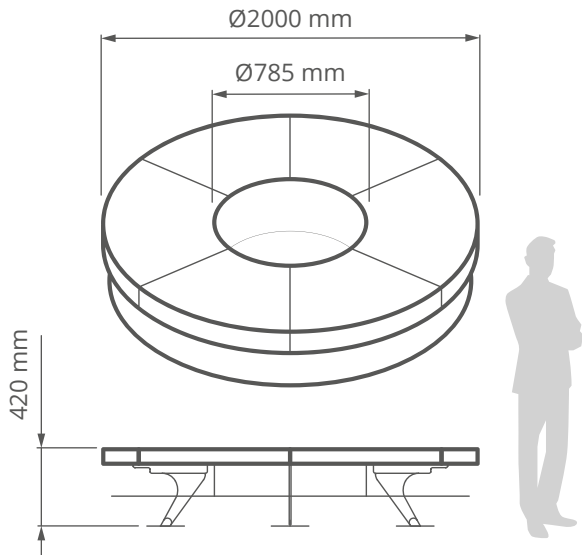
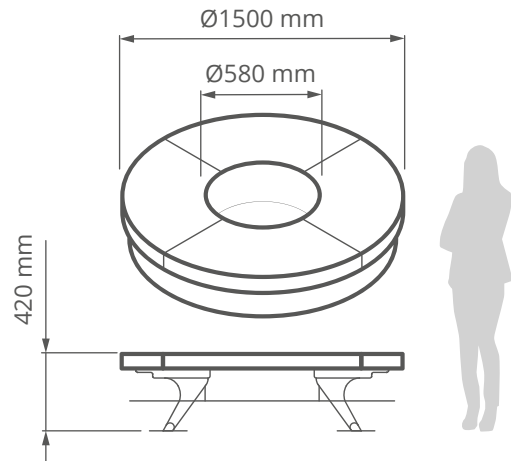
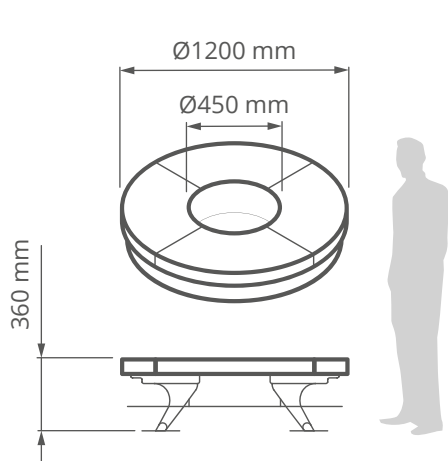
Care and Maintenance

- Keep the fire pit clean.
- Use a soft cloth and lukewarm water to clean the surface.
- Avoid abrasive cleaners, solvents, or degreasers.

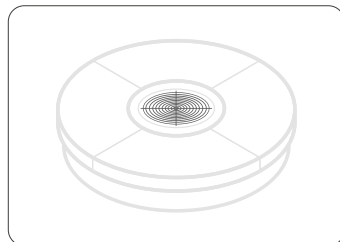
Ercole stone

Registered Design

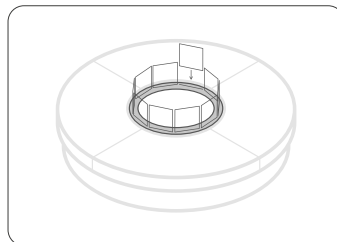
Datasheet



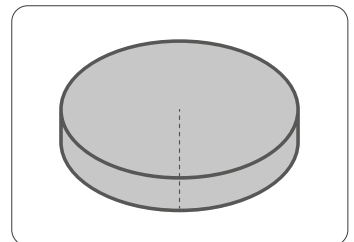
Steel closure top



Stainless-steel barbecue grill kit



Available fire screen
 ■ Glass
 ■ Steel



Storage cover

The images and drawings are for illustrative purposes only and the actual products may differ in size and color.

The drawings are the exclusive property of AK-47 s.r.l. and all rights are reserved. Any unauthorized reproduction and / or disclosure will be prosecuted by law ©