

# Rondo



# Rondo

Registered Design



*A refuge from the breeze of spring evenings or a shelter  
from the cold of winter afternoons.  
Rondo is a cradle for the fire, offering a moment of gentle rest:  
its steel welcomes the flames,  
its stone those who gather around it.  
Its volumes rise with quiet majesty,  
suggesting noble origins — never opulent, always graceful.*

Rondo is an outdoor wood-burning fire pit.

It brings together fire and stone in a simple, contemporary form shaped by technology and craftsmanship.

Steel and flame welcome those who gather around, offering warmth with quiet presence.

A generous number of people can gather around it, sharing the pleasant moments of togetherness that only the light and heat of the fire can create.

Ideal for open spaces, gardens, parks, terraces, hotel outdoor areas, golf clubs, and similar environments.

## SIZES

Ø2060 H330 mm

## MATERIALS

Structure: Pre-oxidized Corten steel.

Top: Brushed Santaflora trachyte.

## ACCESSORIES

Steel closure top for the combustion chamber: included.

Stainless-steel barbecue grill kit, fire screen, and storage cover: optional.

## FUEL

Wood.

Upon request, the fire pit can be geared for LPG or natural gas.

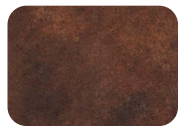
- The product is supplied ready-to-assemble.

# Rondo

Registered Design

## MATERIALS

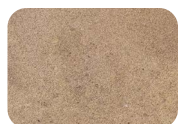
### ▪ Pre-oxidized Corten Steel



Corten 32A  
*Final finish*

Corten steel is supplied pre-oxidized, with a protective patina that shields it from corrosion and defines its warm, textured character. It is resistant to atmospheric agents, stable over time, and does not require additional treatments when used in suitable conditions. Its surface evolves gradually, developing an authentic and distinctive appearance.

### ▪ Santafiora Trachyte



Santafiora 20

A fine and versatile sandstone quarried in Italy, selected for its excellent mechanical properties, durability, and resistance to atmospheric agents.

The slabs undergo dedicated processing and surface finishing that enhance their appearance while preserving the natural variations in colour and structure typical of stone materials.

As a natural element, Santafiora trachyte may vary in appearance depending on the period of extraction.

Our products may display superficial irregularities or chromatic variations.

These are intentional results of our choice to use materials and finishes that embrace natural ageing, making each piece truly unique.

Stone elements may develop fine cracks or slight surface variations—intrinsic qualities of the material that emerge through natural settling and environmental changes.

Over time, cyclical exposure to atmospheric agents such as rain, sun, wind, and local climate conditions may alter the product's appearance.

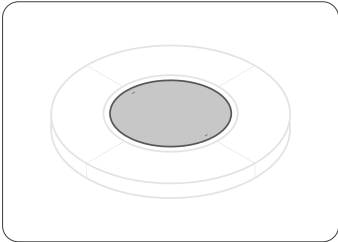
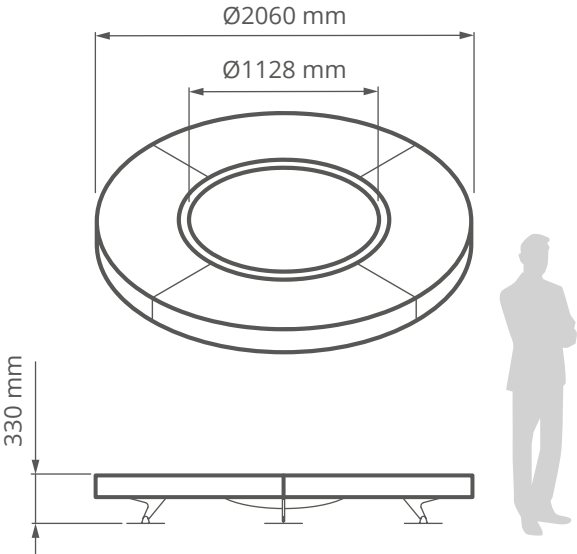
This evolution is not a defect, but a distinctive characteristic of the materials used.

Care and Maintenance

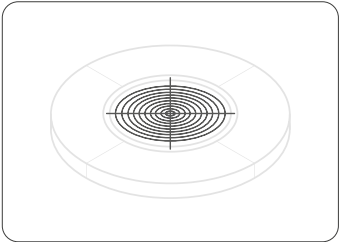
- Keep the fire pit clean.
- Use a soft cloth and lukewarm water to clean the surface.
- Avoid abrasive cleaners, solvents, or degreasers.

# Rondo

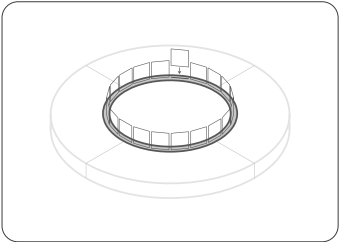
Registered Design



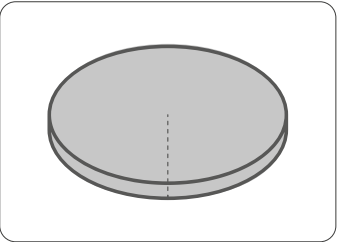
Steel closure top



Stainless-steel barbecue grill kit



Available fire screen  
■ Glass  
■ Steel



Storage cover

The images and drawings are for illustrative purposes only and the actual products may differ in size and color.

The drawings are the exclusive property of AK-47 s.r.l. and all rights are reserved. Any unauthorized reproduction and / or disclosure will be prosecuted by law ©