

# Ercole Ground concrete





# Ercole Ground concrete

Registered Design



*Steady and sober, a living balance between matter and silence.  
Concrete is your leading character, and it encompasses  
the flame in a pure form.  
A vital gesture, a primaeval sign inviting to peace and quiet.  
Time will reveal shades and flaws, which become part  
of your identity.*

Ercole Ground is an outdoor wood-burning fire pit.

It was conceived as the evolution of the Ercole model, from which it inherits materials and proportions, with the absence of the log compartment as its distinctive feature.

The architectural character of this object has been designed for modern environments in which the fire is both part of the decor and a point of encounter.

Ercole Ground can bring people and conversation around its fire, while it burns with the same intensity and warmth as the original element, in its most essential form.

## SIZES

Ø1200 H290 mm  
Ø1500 H300 mm  
Ø2000 H300 mm  
Ø2500 H300 mm

## MATERIALS

Structure: Natural Corten steel.  
Top: Concrete.

## FINISHING

Basic, White, Black, Raw basic, Raw white, Brown, Black lava.

## ACCESSORIES

Steel closing top for fire opening: included.  
Stainless steel barbecue grill, Fire screen, Cordura protective cover: optional.

## FUEL

Wood.  
Upon request, the fire pit can be geared for LPG, natural gas or bioethanol.

- The product is supplied ready-to-assemble.

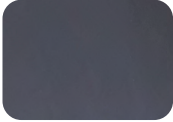
© AK-47 s.r.l. All Rights Reserved

# Ercole Ground concrete

Registered Design

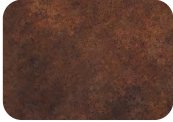
## MATERIALS

### ▪ Corten steel



Corten  
Natural state

32

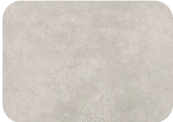


Corten  
Final finish

32A

Corten steel is supplied in its natural state, typically blue-black in appearance (32). At this stage, the surface has not yet developed its characteristic protective patina, which forms gradually under natural weather conditions. The oxidation process depends on exposure to atmospheric agents, and as the steel undergoes its natural cycle of maturation, it acquires its signature deep brown hue (32A).

### ▪ Smooth concrete



Basic

35



White

36

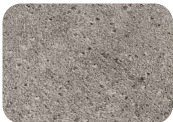


Black

38

A smooth finish reveals the pure essence of concrete — a solid, polished surface defined by its uniform appearance and refined tactile appeal. The cement employed is a lightened compound with dye in the cement paste, which has been formulated to ensure mechanical resistance, colour stability, and a lighter weight. The surface is treated with special coatings which preserve aesthetics and performance without altering its natural colour hue.

### ▪ Textured concrete



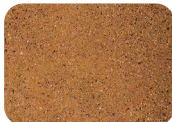
Raw basic

45



Raw white

46



Brown

37



Black lava

48

A refined texture evokes the natural roughness of limestone, with concrete revealing the same depth and authenticity as natural stone. The surface is crafted using artisanal techniques that define its character and highlight its controlled irregularities, making each piece unique in form and chromatic balance. The special finish is achieved through the application of specific oxides, deposited via a controlled nebulised coating, where the oxidising agent acts exclusively on the outer layer.

Our products may display superficial irregularities or chromatic variations. These are intentional outcomes of our choice to use materials and finishes that enhance the natural aging process, making each piece truly unique.

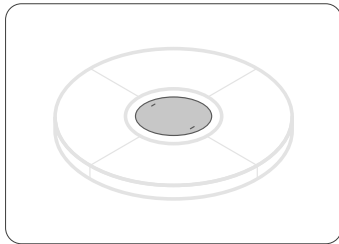
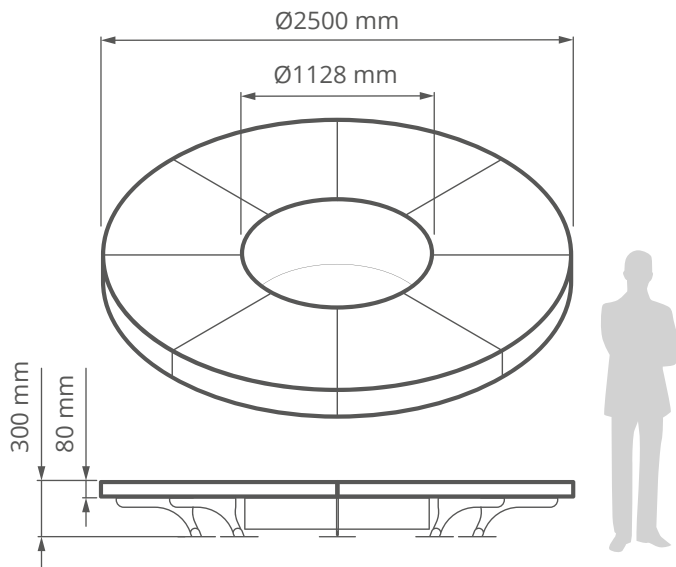
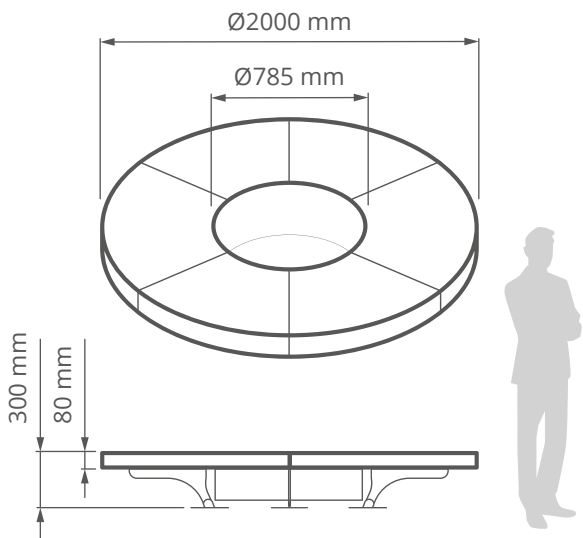
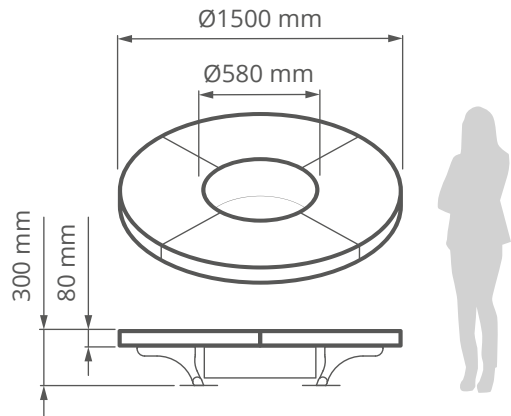
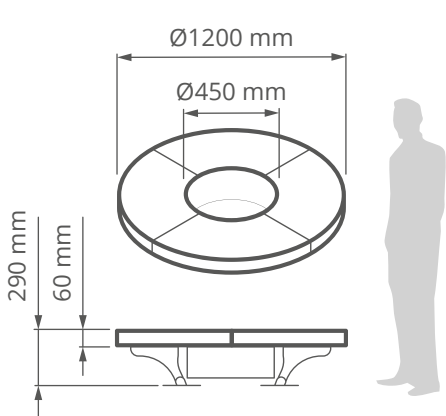
Concrete artefacts may develop fine cracks or slight surface variations—intrinsic qualities of the material that arise from natural settling and environmental changes.

Over time, cyclical exposure to atmospheric elements such as rain, sun, wind, and local climate conditions may alter the product's appearance. This evolution is not a defect, but a distinctive feature of the materials used.

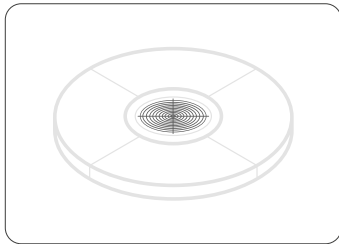
Care and Maintenance:  
Keep the fire pit clean.  
Use a soft cloth and lukewarm water to clean the surface.  
Avoid abrasive cleaners, solvents, or degreasers.

# Ercole Ground concrete

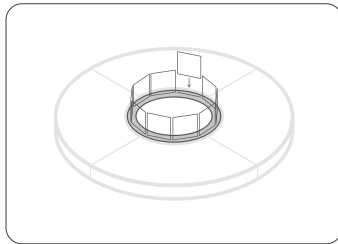
Registered Design



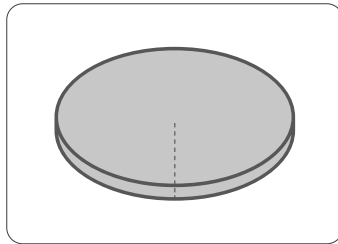
Steel closing top for fire opening



Stainless steel barbecue grill



Fire screen



Protective cover

The images and drawings are for illustrative purposes only and the actual products may differ in size and color.

The drawings are the exclusive property of AK-47 s.r.l. and all rights are reserved. Any unauthorized reproduction and / or disclosure will be prosecuted by law ©